



# Visitor Centre Information



The Visitor Centre is situated on a mixed dairy farm of 63 hectares, and forms part of the Hagley Farm School.

We are located approximately 20 minutes from Launceston and one hour from Devonport and have been in operation as both a day trip and camp destination for Tasmanian schools since 1976.

All our activities are organised and implemented by our two teachers, who provide extensive environmental, farm, heritage and mapping experiences for children from Kinder to Grade 6.

We are also able to provide our cottages for Primary School groups wishing to use us as an accommodation base for trips within our region. To help plan your trip we have listed in this information booklet some suggested venues that are within close proximity to Hagley.

## Accommodation

The Centre can accommodate up to 72 students plus staff in cottage style accommodation. All cottages have full kitchen facilities to assist with supper & drink preparation.



Each cottage has a TV with a built in DVD player - staff will need to bring their own supply of DVD's as we do not supply any.

The cottages have bunk style beds for students. Each bed has a mattress and a blanket. Visitors will need to bring a **Pillow** and other bedding i.e. sleeping bag or sheets/ doona.

### Cottage One:

This cottage has been refurbished and caters for up to 34 students:

- 3 rooms with 8 beds
- 1 room with 6 beds
- 1 room with 4 beds

### Staff:

1 main staff bedroom that sleeps 3  
1 smaller room that can sleep 2  
Staff have private bathroom facilities

### Cottage Two:

This cottage caters for up to 38 students:

- 3 rooms with 6 beds
- 2 rooms with 10 beds

### Staff:

2 staff bedrooms that sleep 2 in each  
Staff have private bathroom facilities

# MEALS

Visiting groups are fully catered for. We have a well equipped kitchen and dining area. Meal times are usually 7.30am, 12.30pm and 5.30pm, however by arrangement these times have some flexibility. We also provide morning, afternoon teas and supper.

We are happy to provide cut lunches for groups going offsite for the day or re-negotiate prices for groups wanting to have their evening meal in Launceston. Please enquire for further information.

**Please note: Camp groups are required to bring morning tea and a cut lunch on the first day!**

**Students also need to have a refillable drink bottle for use throughout their stay.**

*(Most schools also encourage students to bring some home-cooking to supplement the snacks provided).*



# SUPERVISION

In accord with Departmental guidelines we require adult supervision at the rate of at least one adult to every fifteen students, visiting staff need to be aware of and follow Department of Education guidelines regarding excursions . From experience we advise that teaching and supervising staff should not bring younger children or pets on the visit.

Although Centre staff will prepare the program and manage visiting groups, the teacher in each cottage is responsible for the supervision of students within that cottage. Visiting staff must ensure camp rules are enforced and maintain proper supervision at all times, a minimum of one teacher and one other adult must sleep in each cottage.

Throughout the first evening of a camp, our teaching staff are present to establish meal routines and to conduct the evening activities. (Visiting staff are in charge during subsequent evenings).

## Swimming Pool

Schools that visit during the warmer months can utilise our 25 metre Indoor Swimming Pool. The pool is usually open mid November until the end of the year and then again in February to March/April. The use of the pool is subject to availability and also subject to a Bronze Medallion holder being in attendance. If schools do not have a supervisor with them, we can usually organise one to attend.

The cost per swim is \$2.00 per person (+GST if applicable)

## First Aid

First Aid kits are located in each cottage and in our morning tea room. However it is advisable that schools bring their own kit as well, especially if they are leaving our site for day trips etc.

Please be aware that it is the responsibility of visiting staff to both **administer** and **secure** any medications required by their students whilst on camp.

## Telephones

We recommend that schools should bring a mobile phone with them in case of emergency, as there are no phones in the cottages. Urgent messages can be left at the Hagley School office during business hours by phoning 6392 2272.

## **Booking Information - Organising Your Visit...**

Once you have confirmed your booking, you will then need to choose the activities you want your class to take part in.

The activities currently available are listed in this document; from this list you can choose (in order of preference) the activities you would like to do, bearing in mind cost and time restraints (please see pricing information).

Generally around 3 - 5 activities a day can be achieved if you spend a full day at the Environment Centre.

List your choices on the booking sheet provided and return to us, we will then draft and send an itinerary to you.

(N.B. Itineraries are subject to change to suit operational or weather issues).

### **General Reminders to help organise your camp:**

1. Obtain permission from your Principal before making a booking.
2. Obtain quotes for your transport to and from Hagley. Book & confirm transport.
3. Ensure funding for the visit is approved.
4. Send booking form and the deposit to Hagley.
5. Make any arrangements/bookings for places to visit either whilst at Hagley or on the journey to and from.
6. Organise transfer of duty for supervising staff.
7. Send home to parents the camp details and ensure permission is granted from all attending. Include a camp equipment list (a copy can be supplied from us with your itinerary).
8. Complete Risk Management Plan (proforma on our Hagley Visitor Centre website).
9. Send a list of any dietary/medical requirements to Hagley at least two weeks prior to your visit.
10. On camp day make sure all students have a cut lunch & that you have any medications needed for students clearly named and secure.
11. It is advisable that Camp groups have access to a private vehicle.

# **HAGLEY ACTIVITIES**

We endeavour at all times to involve students in “hands on” experiences. The following list gives a good indication of the range of experiences teachers can choose from.

Relevant Curriculum information can be accessed on our website.

## **Farm Activities**

### **Mixed Farm**

Topics covered include - animals, crop & soil management, water usage, fencing, farm machinery, economic aspects of farming, animal reproduction and babies (seasonal).

A farm walk and/or trailer ride is included.

### **Dairy**

Observation of the dairy herd. Breeds of dairy cows, machinery, milk products, economics, life cycles, feeding and a visit to the dairy.

### **Sheep**

Observation of our flock. Deals with different breeds of sheep, flock management, facts about wool and aspects of a small shearing shed. Lambing takes place during August. Shearing takes place late spring/summer.

### **Poultry**

Students will study our free range poultry operation including life cycles, egg collection, packaging and marketing.

## **Mapping Activity**

### **Photo Trail**

Students develop their map-reading and observation skills by locating a series of photographed objects around the immediate environment

## **Heritage Activities**

### **Cottage Industries**

Each student participates in bread, butter and candle making. They will also have a turn at spinning wool. Cost per student is \$5.80 (minimum fee of \$130 per session applies)

## **Home Life Museum**

In this museum students will discover numerous household items from previous eras. Some of the practical activities will include using washboards, a mangle then flat irons, grinding wheat to make damper or scones in our wood-fired stove, dressing up and role-plays.

## **Olde Classroom**

The original classroom was built at Hagley in 1865. Using role-play, children will experience a lesson taken in the 'olde style' and will have the opportunity to write with pen and ink.

## **Agricultural Museum**

Machinery, harnesses, tools and implements used in the district years ago are handled by the children. Technological progress is investigated.

## **St Marys Church**

This beautiful old church with its English gardens and grave yard is within walking distance and offers a fascinating glimpse into the past.

## **Environment Activities**

### **Pondlife**

Children will catch & identify a variety of pondlife from a farm dam, as part of a waterwatch study. This will include a discussion on frogs.

### **Dung Beetle**

Students will study the increasing impact of introduced dung beetles in our pastures and the effect this is having on fly populations.

### **General Environment**

An indoor activity taking a broad look at our environment & the impact of humans since white settlement.

### **Tree Study**

- a. Farm Trees-discussion of the use of trees & environmental aspects of trees  
e.g. shelter belts, soil conservation, salinity, animal shelters & nesting sites.
- b. Tree Care-caring for young trees that have been planted over recent years  
e.g. weeding, mulching, staking & watering.

### **Water**

This activity looks at where water comes from on a farm and how it is used. Children will test water to determine: Ph, conductivity and turbidity.



## **Places of interest ...**

Some groups may wish to use Hagley as a base from which to visit other places, or they may wish to visit such places on their way to or from Hagley.

The following list of suggested destinations is arranged according to distance from Hagley.

<b>Westbury</b>	<b>Maze, Pearn's Steam World</b>
<b>Hadspen</b>	<b>Entally Estate</b>
<b>Deloraine</b>	<b>Ashgrove Cheese Factory 41 Degrees South Aquaculture</b>
<b>Mole Creek</b>	<b>Trowunna Wildlife Park Marakoopa Caves Stephens' Honey Factory</b>
<b>Launceston</b>	<b>Launceston Aquatic Centre Maritime College Queen Victoria Museum Cataract Gorge Trevallyn Dam Village Cinemas Tasmania Zoo</b>
<b>Tamar Valley</b>	<b>Seahorse World Grubb Shaft Museum Tamar Wetlands Platypus House Tamar Island</b>

## **ENQUIRIES**

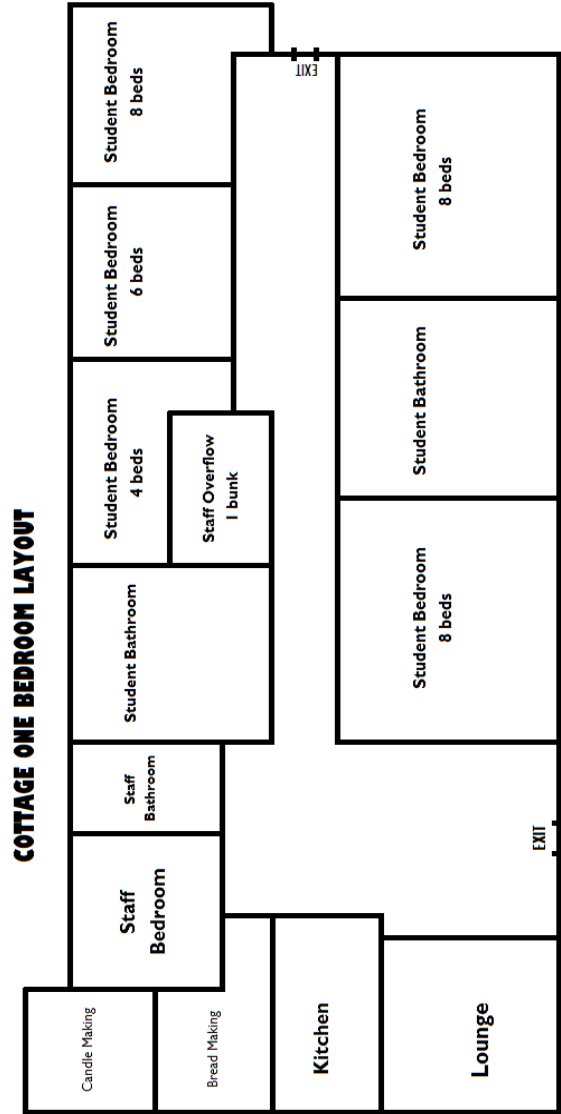
For more information or to make a booking to visit the Centre please contact us on :-

Telephone: (03) 6392 2272

Facsimile: (03) 6392 2221

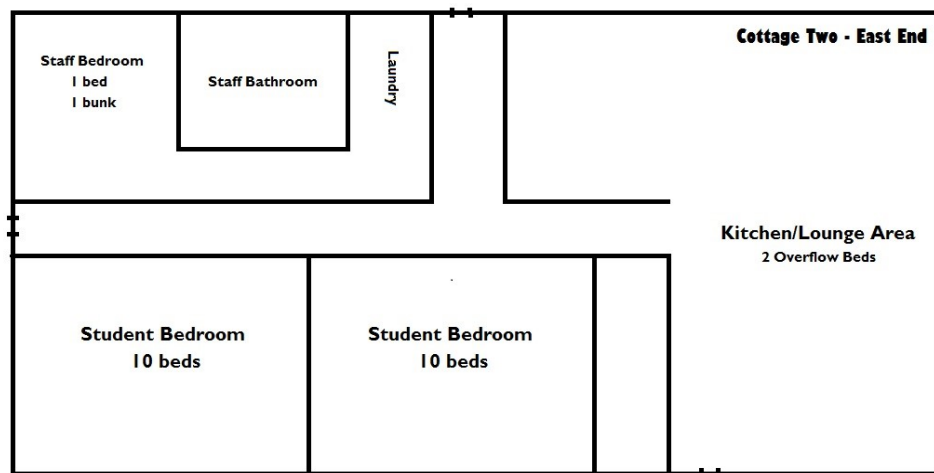
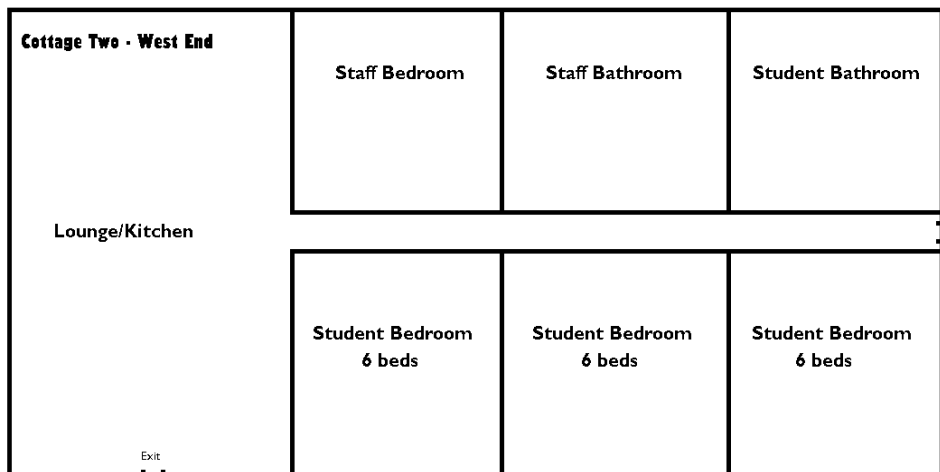
Email: [Hagley.Farm.Primary@education.tas.gov.au](mailto:Hagley.Farm.Primary@education.tas.gov.au)

FLOOR PLAN - COTTAGE I



N.B. Drawing not to scale

## FLOOR PLAN - COTTAGE 2



*N.B. Drawing not to scale*